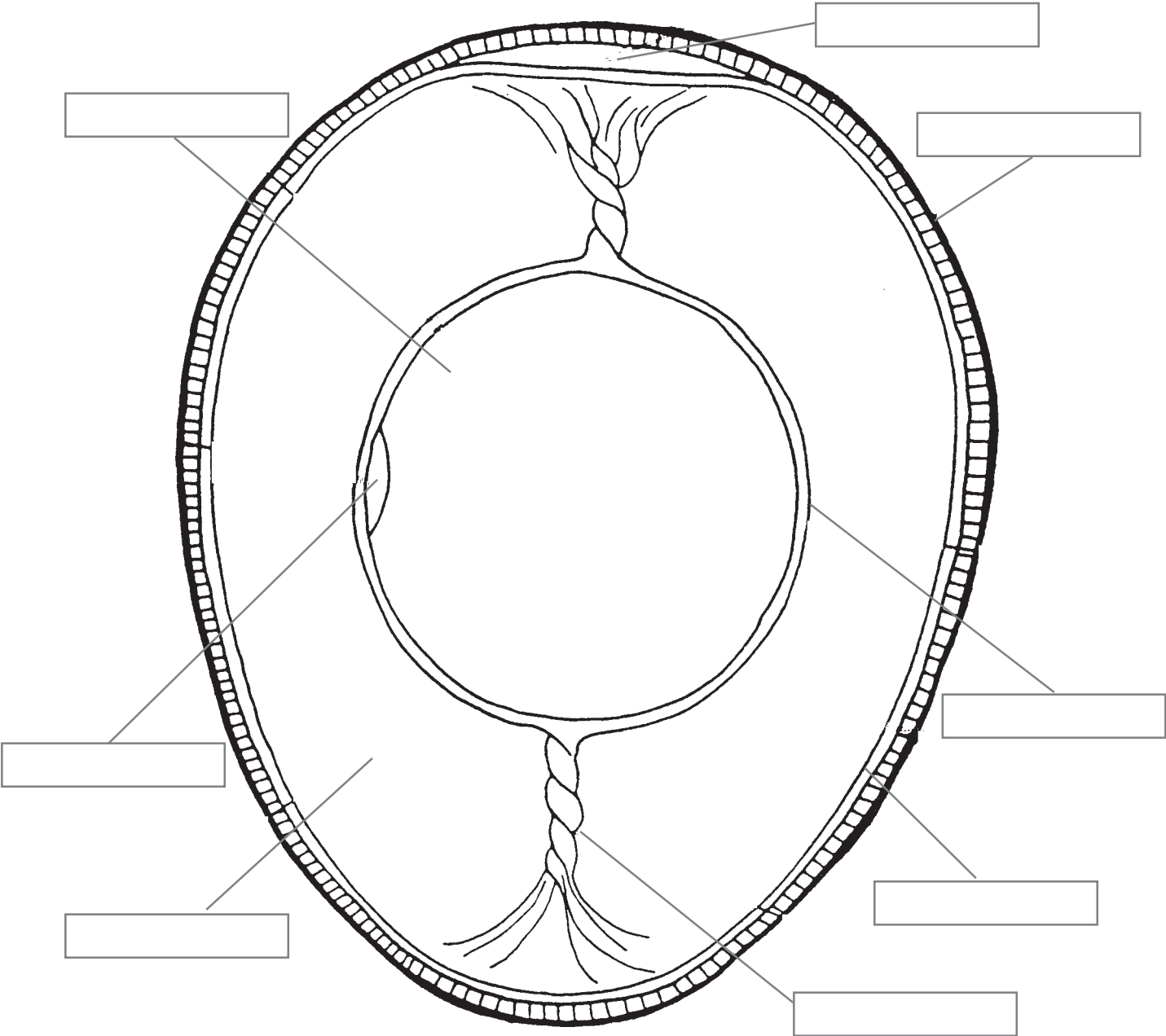


Egg Parts

Color each part of the egg a different color and label each part of the egg.



Use each word only once:

air cell
germinal disc
vitelline membrane

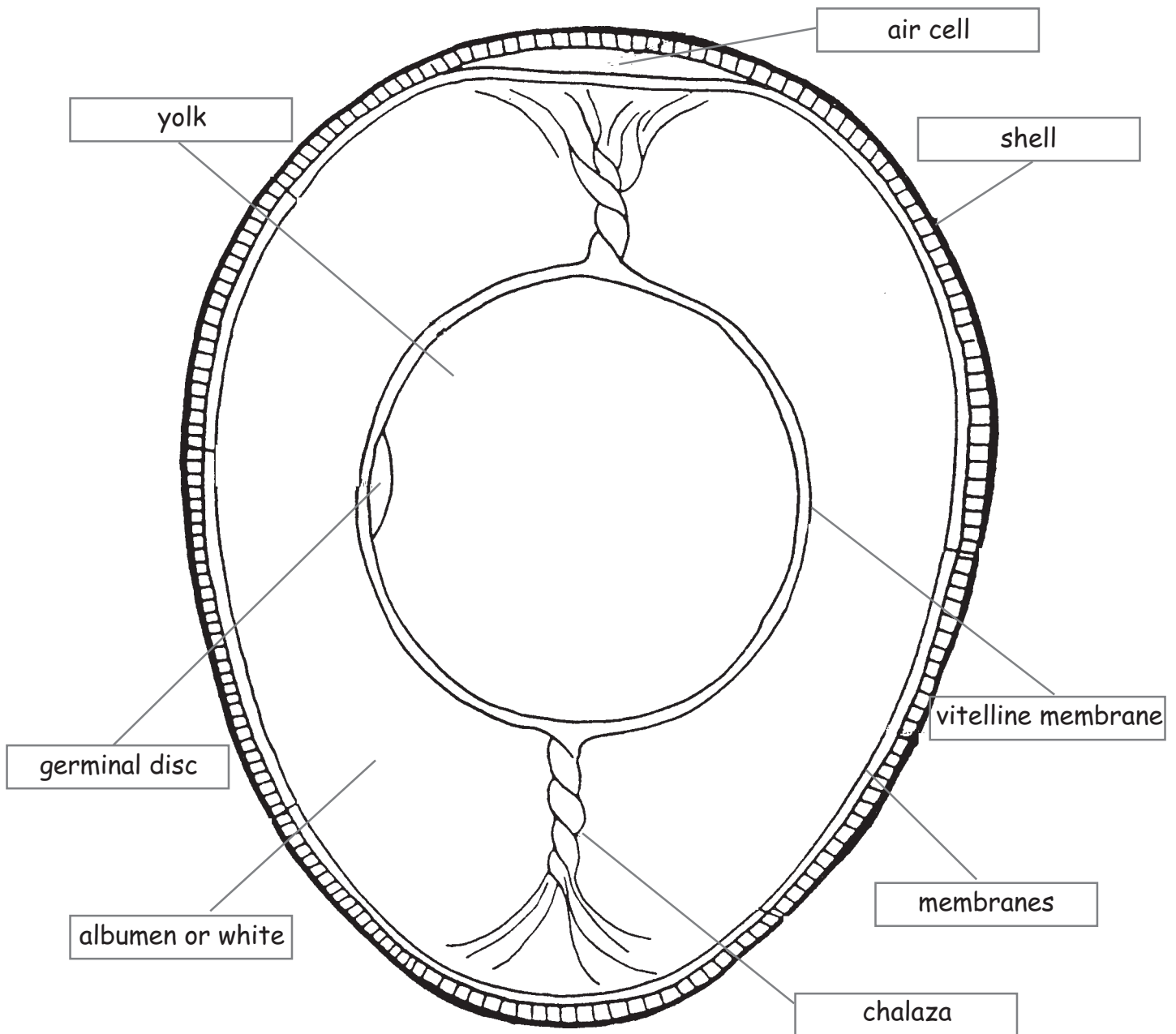
albumen or white
membranes
yolk

chalaza
shell

KEY

Egg Parts

Color each part of the egg a different color and label each part of the egg.



Use each word only once:

air cell
germinal disc
vitelline membrane

albumen or white
membranes
yolk

chalaza
shell