

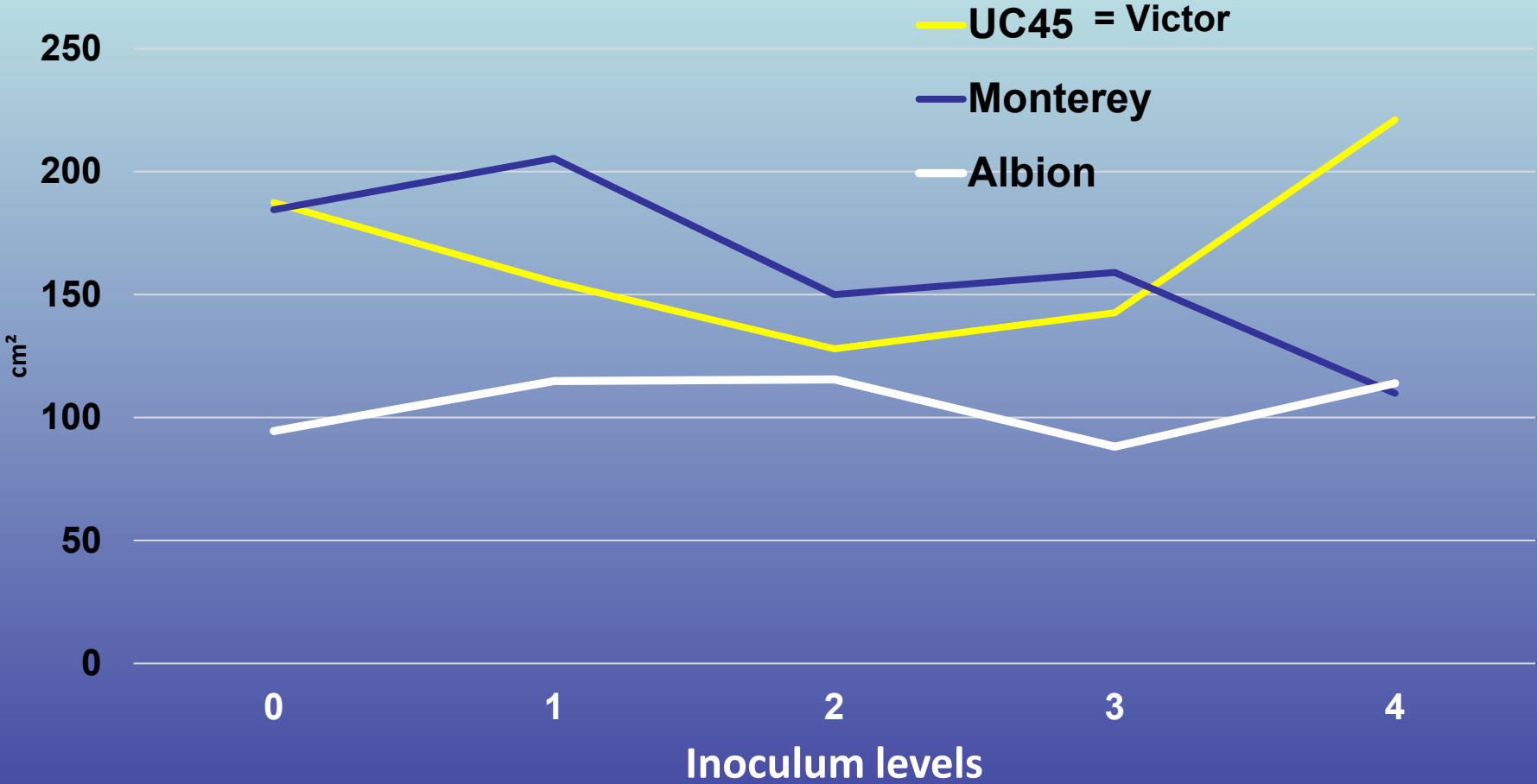
# How much Fusarium in soil can my strawberry handle?

2000 CFUs per gram (4),  
1000 CFUs per gram (3),  
500 CFUs per gram (2),  
100 CFUs per gram (1),  
0 CFU (just sand) (0).

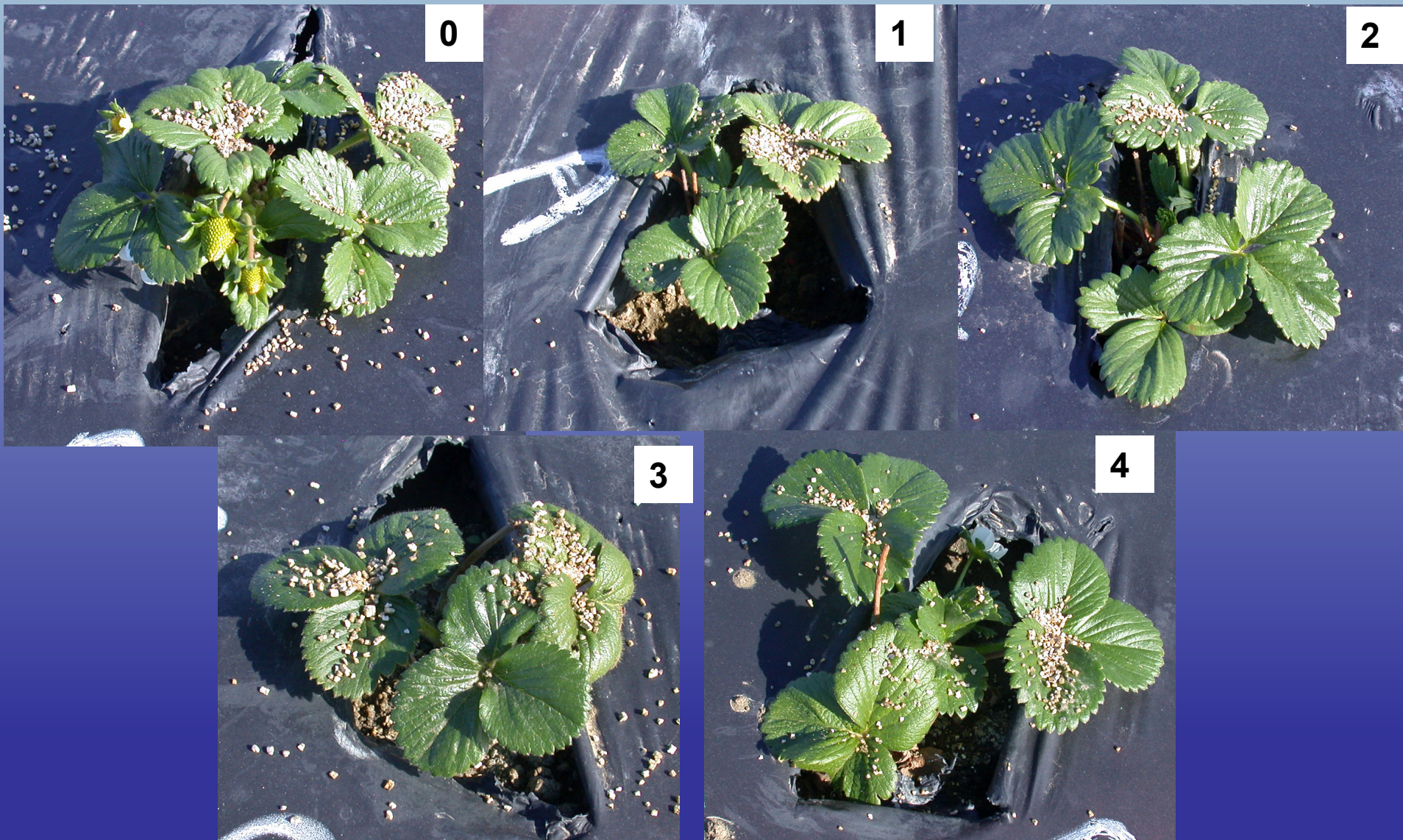
# Treatments

- **Soil excavated from planting holes (1L) is mixed with Fusarium-inoculated sand (0.1L) and returned to planting holes**
- **3 cultivars planted in RCBD plots with 4 reps:**
  - Victor (resistant),**
  - Monterey (moderately susceptible)**
  - Albion (susceptible)**

# Plant size in response to Fusarium (01/05/2018)



# Albion in response to Fusarium (12/02/2018)



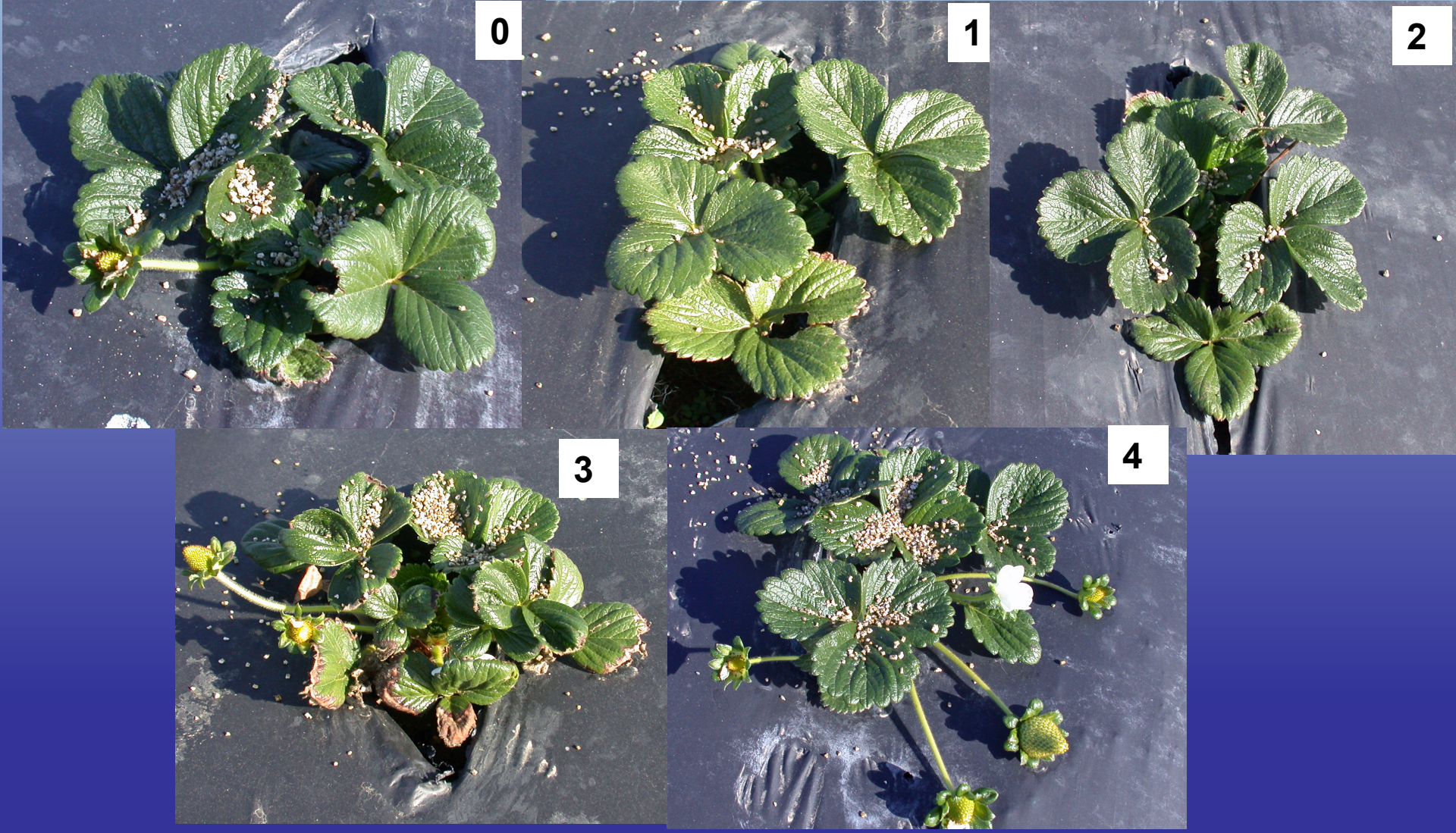


# Monterey in response to Fusarium (12/02/2018)





# Victor in response to Fusarium (12/02/2018)





# Albion without Fusarium - May





# Albion in response to Fusarium - May



1



2



# Albion in response to Fusarium - May

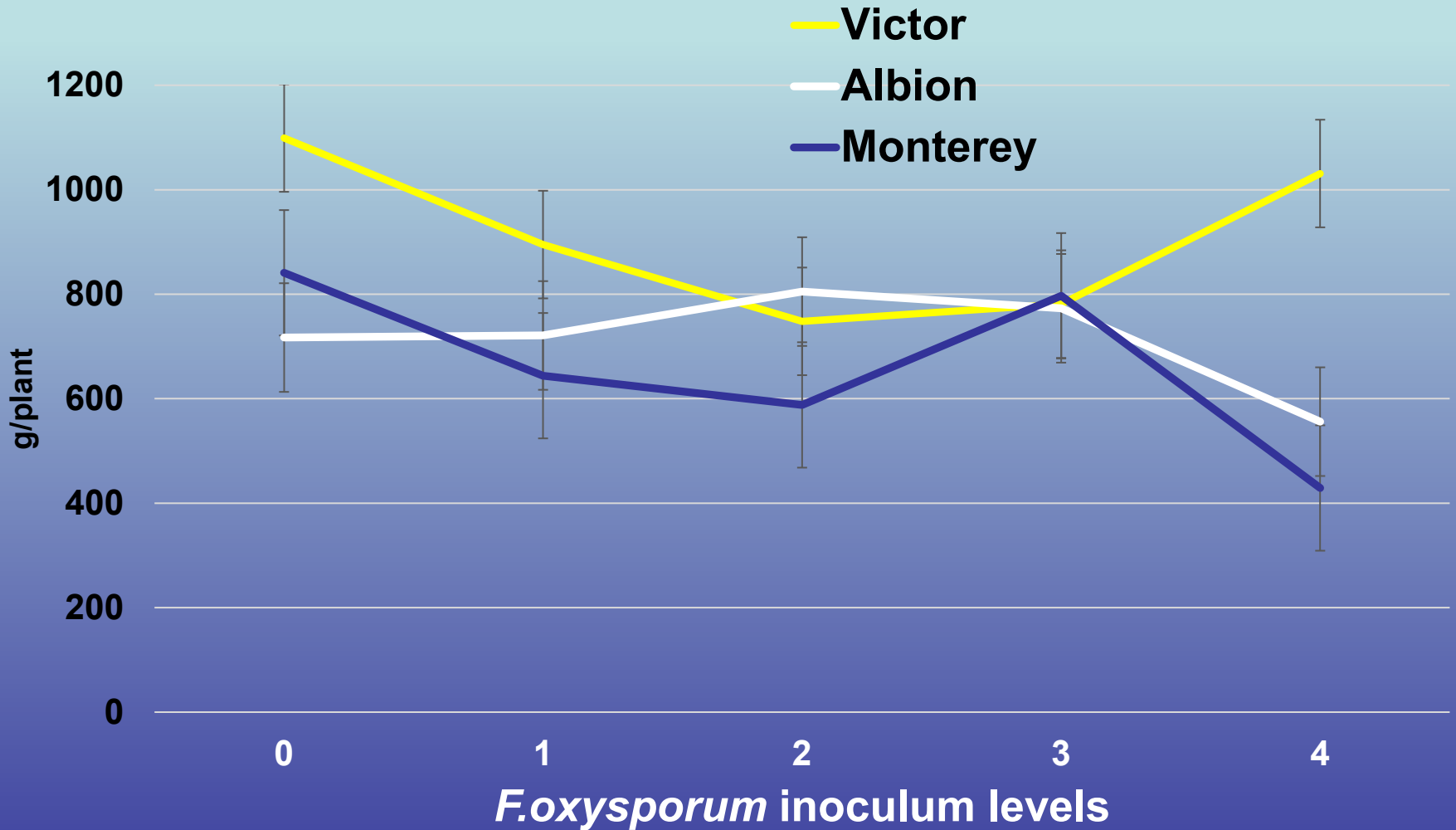


3

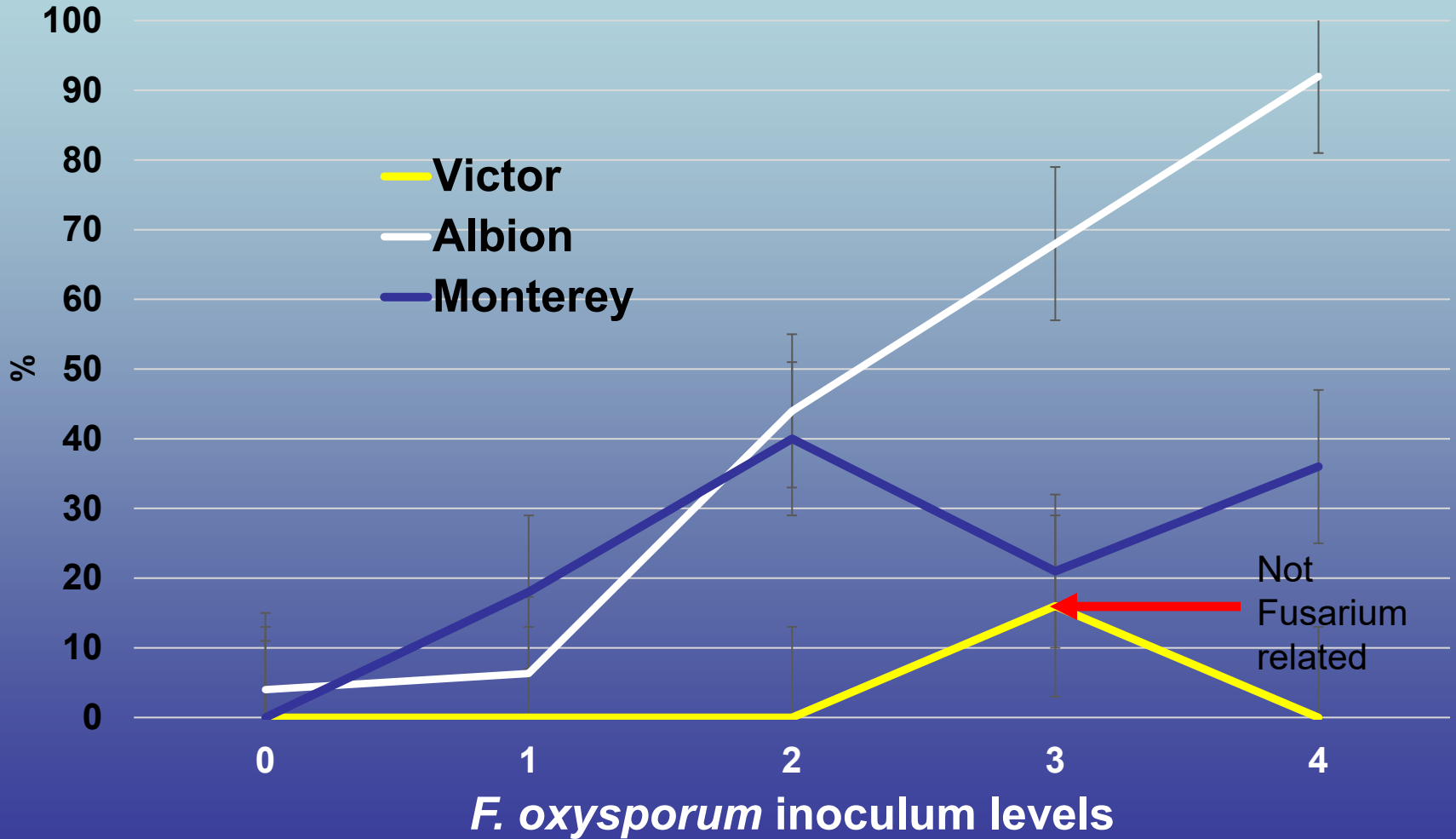


4

# Fruit yield (total) in response to Fusarium



# Percent mortality due to Fusarium, 07/05/2019





# What's next?

- Another season of data to help design prediction models = relationship of pathogen density with cultivar performance
- Do the same for *Macrophomina phaseolina* (charcoal rot pathogen)