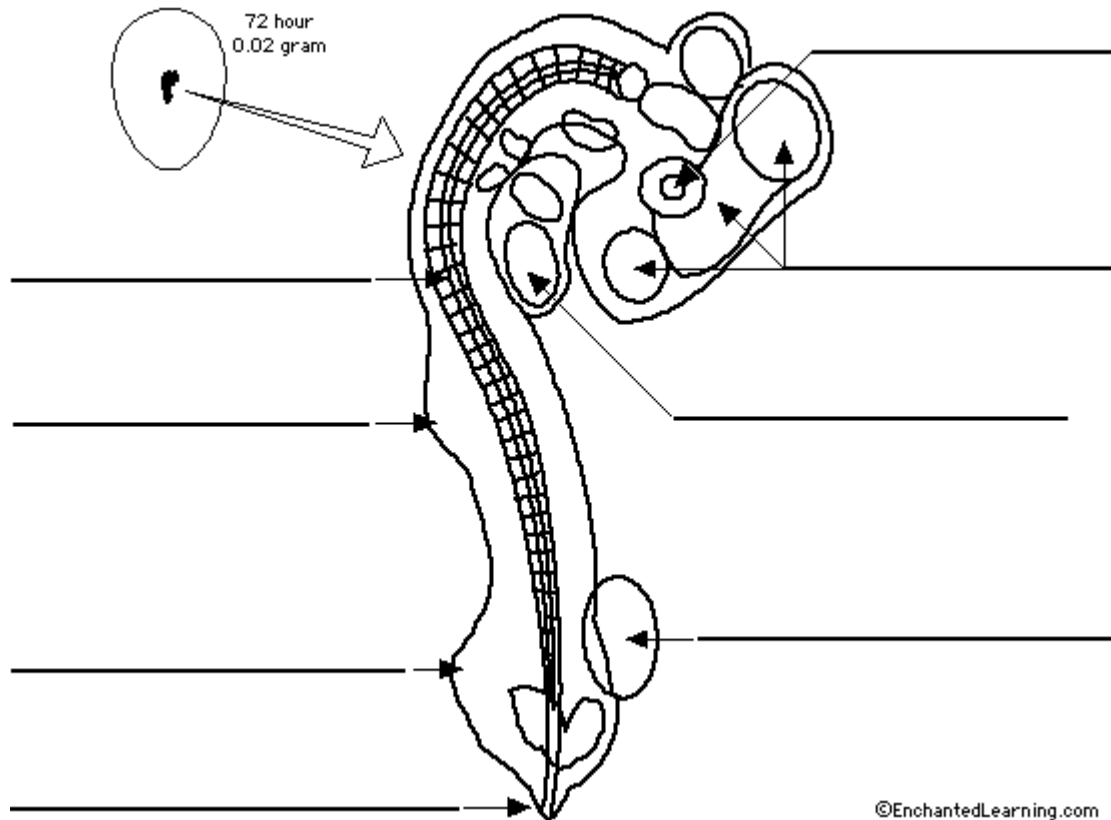


## Label the Chick Embryo (72 hours)

Label the cross section of a newly-laid chicken egg.



**allantois** - a large sack that holds some of the embryo's waste. It is located near the far end (the posterior) of the embryo, close to the leg buds.

**brain** - the developing brain takes up much of the head area (at the anterior) of the embryo.

**eye** - at this point in development, the eye consists of an eye cup and lens, and is located near the brain.

**heart** - the developing heart is above (anterior to) the wing buds and below (posterior to) the head.

**leg bud** - the beginning of the development of the legs are small bumps of tissue located just above (anterior to) the tail bud.

**spinal cord** - the developing spinal cord runs through the length of the embryo, from the brain to the tail.

**tail bud** - the beginning of the development of the tail is located at the far end (the posterior) of the embryo.

**wing bud** - the beginning of the development of the wings are small bumps of tissue located in the mid-section of the embryo.