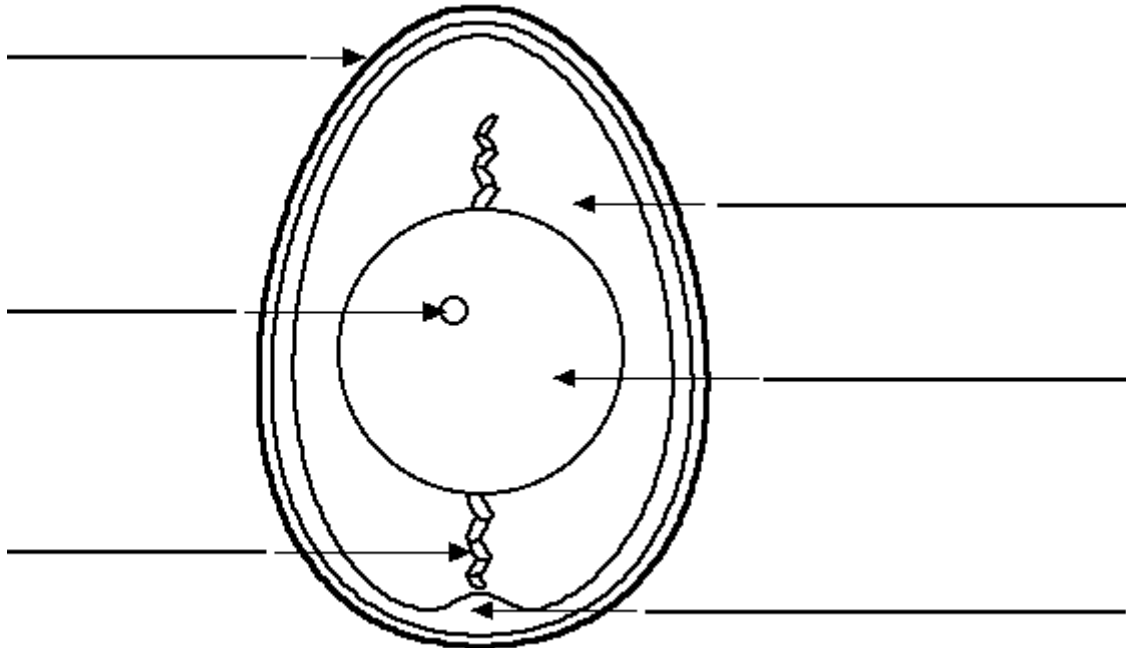


## Label the Chicken Egg (#1)

Label the cross section of a newly-laid chicken egg.



©EnchantedLearning.com

**air cell** - an empty space located at the large end of the egg; it is between the inner and outer shell membranes.

**chalaza** - a spiral, rope-like strand that anchors the yolk in the thick egg white. There are two chalazae anchoring each yolk; one on the top and one on the bottom. (The plural of chalaza is chalazae.)

**germinal disc** - a small, circular, white spot (2-3 mm across) on the surface of the yolk; it is where the sperm enters the egg. The nucleus of the egg is in the blastodisc.

**shell** - the hard, protective coating of the egg. It is semi-permeable; it lets gas exchange occur, but keeps other substances from entering the egg. The shell is made of calcium carbonate.

**albumin** - the egg white.

**yolk** - the yellow, inner part of the egg where the embryo will form. The yolk contains the food that will nourish the embryo as it grows.