

**Las Flores Learning Garden -
A partnership between the City of Napa and UC Master Gardeners of Napa County.
Phase 1-planting area #2**

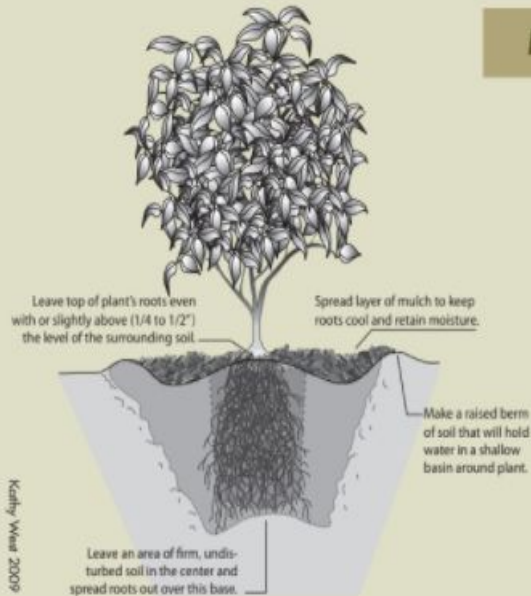
On **Monday Nov. 23, 2020** the UC Master Gardeners and City of Napa workers placed 200+ plants in Phase 1-planting area #2 at the new Las Flores Learning Garden located at the Las Flores Community Center, 4300 Linda Vista Avenue in Napa. All the plants chosen are low-water, low-maintenance and will provide year round color. UC Master Gardeners will use this area of the garden to inform and educate the community with research-based information on the care and maintenance of this type of garden and the plants. With the visitor in mind, two 'educational bumpouts' were installed. A representative plant of each type in the area's design is planted in a half circle around these 'bumpouts' so that visitors may view and touch the plants up close and then also observe the same plants within the complete design from the backless benches to be installed soon. Below is information on the plants that are located in the Las Flores Learning Garden Phase 1-planting area #2. Also, find further information about planting perennials and future garden plans for the Las Flores Learning Garden.

LATIN NAME	COMMON NAME	INFORMATION LINK
Arbutus unedo	Strawberry Madrone	https://selecttree.calpoly.edu/tree-detail/arbutus-unedo
Lagerstroemia indica 'Catawba'	Crape Myrtle	https://selecttree.calpoly.edu/tree-detail/lagerstroemia-indica-catawba
Abelia grandiflora 'Kaleidoscope'	Kaleidoscope Abelia	https://www.sunsetwesterngardencollection.com/the-collection/plant/kaleidoscope
Arctostaphylos edmundsii	Little Sur Manzanita	https://landscapeplants.oregonstate.edu/plants/arctostaphylos-edmundsii
Arctostaphylos 'Emerald Carpet'	Emerald Carpet Manzanita	https://www.calfloranursery.com/plants/arctostaphylos-emerald-carpet
Asparagus densiflorus 'Myers'	Meyerei fern	http://www.missouribotanicalgarden.org/PlantFinder/PlantFinderDetails.aspx?taxonid=241940
Cornus sericea 'Olive and Gold'	Yellow Twig Dogwood	http://www.missouribotanicalgarden.org/PlantFinder/PlantFinderDetails.aspx?kempercode=c330
Loropetalum chinense	Red Loropetalum	https://plants.ces.ncsu.edu/plants/loropetalum-chinense-f-rubrum/
Muhlenbergia capillaris	Pink Muhly Grass	https://www.missouribotanicalgarden.org/PlantFinder/PlantFinderDetails.aspx?kempercode=b457
Olea Europa 'Little Ollie'	Little Ollie olive	https://www.monrovia.com/plant-catalog/plants/1894/little-ollie-dwarf-olive/#:~:text=Olea%20europaea%20'Montra'&text=Dwarf%2C%20non%2Dfruiting%20evergreen%20with,Heat%2C%20drought%20and%20salt%20tolerant.
Trachelospermum jasminoides	Star Jasmine	http://www.missouribotanicalgarden.org/PlantFinder/PlantFinderDetails.aspx?kempercode=a155

SHRUB PLANTING INSTRUCTIONS—courtesy of UC Davis Arboretum

Preparation

- Identify a planting location with the correct amount of sun or shade for your plant.
- Dig planting hole as shown in diagram. Make hole just deep enough so top of plant's roots will be even with, or slightly ($1/4"$ to $1/2"$) above, the level of the surrounding soil. If soil in planting hole is hard, loosen it with a shovel but leave a base of firm, undisturbed soil in center.



Planting

- Tap pot firmly on sides and bottom to loosen root ball. Slide plant out of pot. Gently loosen exposed roots, especially if thickly matted.
- Place plant in center of hole, spreading roots out over firm soil base.
- Backfill using original soil from hole. Add the soil in several stages, breaking up large chunks. Use your hands to firm soil around the roots at each stage.
- Once hole is filled, use any extra soil to make a berm of soil around the plant as shown. This berm will hold water in a basin around the plant. Water gently and thoroughly immediately after planting.
- Spread a layer of mulch around plant to help keep roots cool and retain moisture.

Establishment and Maintenance

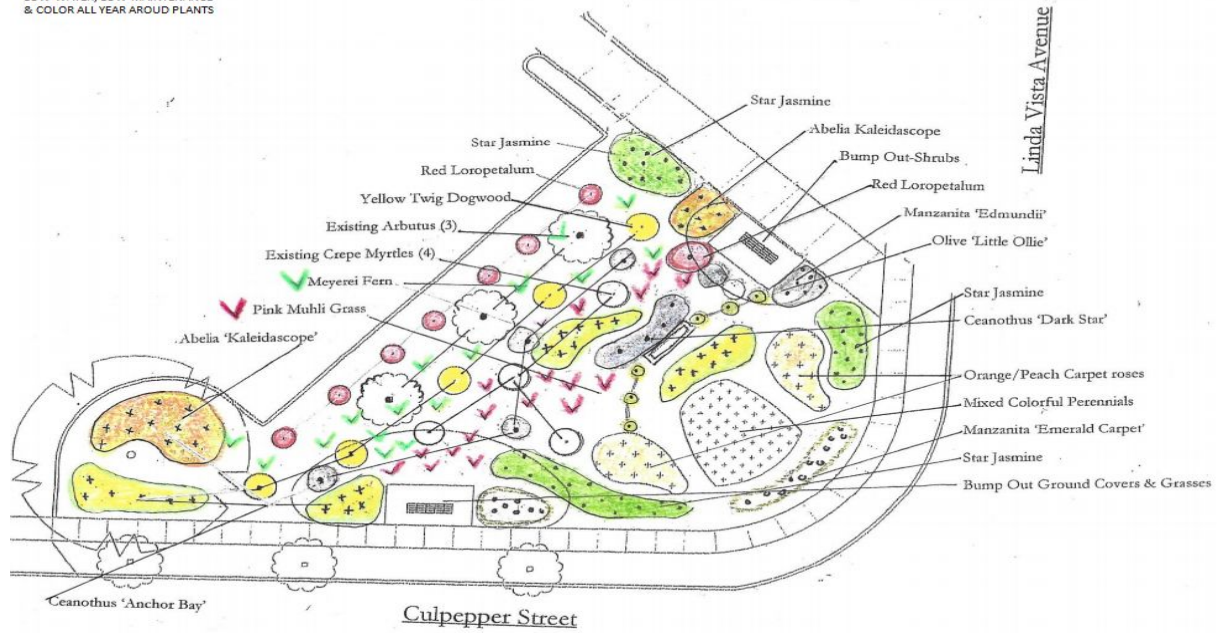
- In fall, cooler temperatures help plants establish quickly and rains keep new plants watered. For spring planting, or during a dry fall, all new plants need frequent irrigation at first (every two to three days if it's warm). After a few weeks, change to twice a week watering until weather cools and rains begin.
- During first season after planting, monitor your new plants regularly for signs of wilting and give extra water as needed. Do not let plants dry out while they are becoming established. Even drought-tolerant plants need regular water at first.
- Once plants are established, follow regular pruning and watering recommendations for each species.

THE DESIGN

PHASE 1

LOW-WATER, LOW-MAINTENANCE
& COLOR ALL YEAR AROUND PLANTS

UC MASTER GARDENERS OF NAPA COUNTY LAS FLORES LEARNING GARDEN PLANTING AREA #2

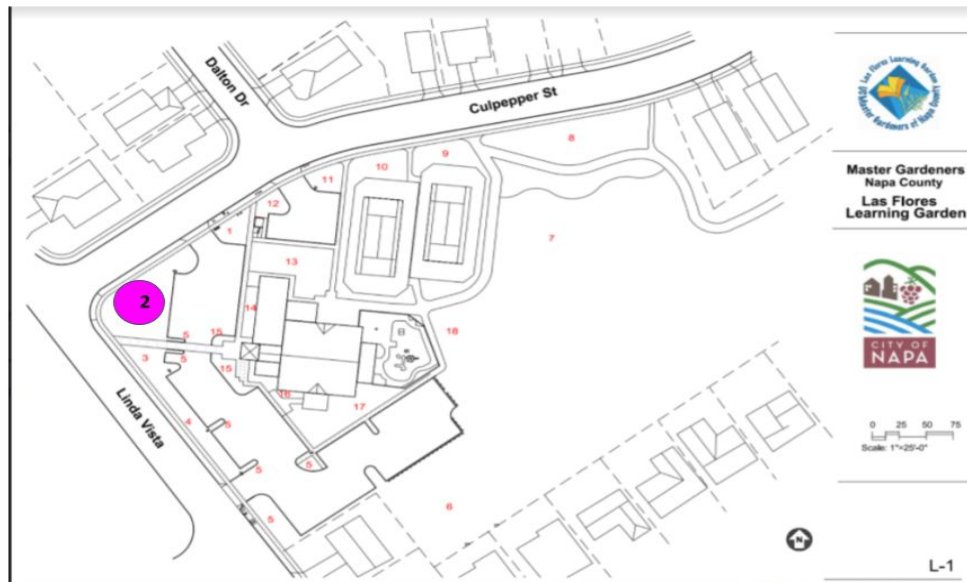


FUTURE PLANS

UC MASTER
GARDENER &
CITY OF NAPA

LAS FLORES LEARNING GARDEN

NUMBERED
PLANTING AREAS
WITH
RECOMMENDED
CONTENTS



- 1-Landscape grasses
- 2-Water wise/low maintenance w/color for most of the year
- 3-Native Plants
- 4-Pollinator garden + trees TBD
- 5-Succulent/dry garden
- 6-Wellness Garden = Zen Garden, Sensory garden, meditation labyrinth
- 7-Education Center=Greenhouse; teaching pavillion; storage shed; compost; veg trials area; veg summer & winter raised beds & bush type blueberries & boysenberries & strawberries

- 8-Firewise
- 9-TBD
- 10-TBD
- 11-TBD
- 12-Landscape grasses
- 13-Children's garden w/fence + ADA raised bed area
- 14-Citrus
- 15-Tubers/bulbs/corms color all year garden
- 16-TBD
- 17-Lawn alternatives
- 18-Rain garden/swale