



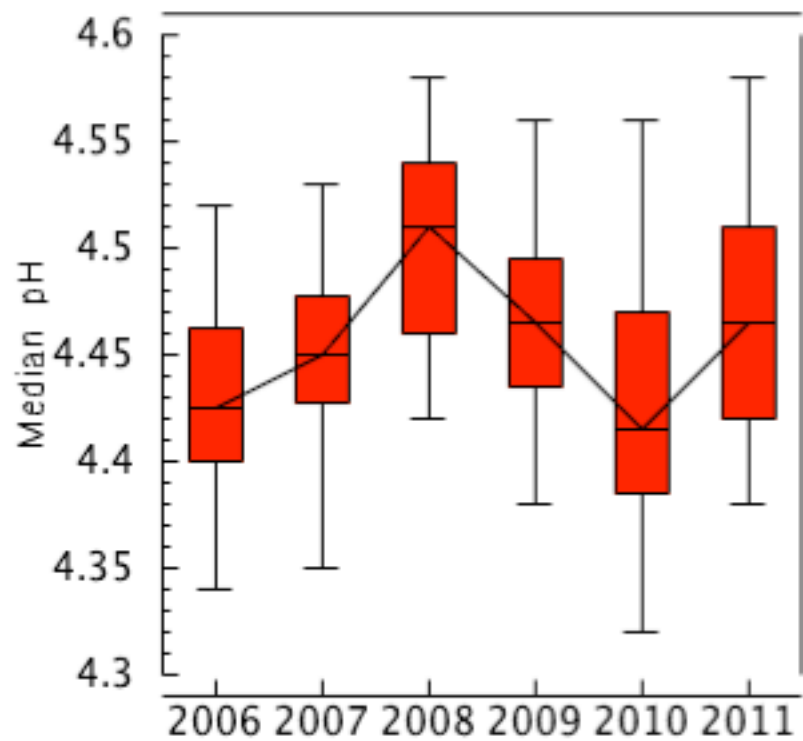
**2011 UCCE STATEWIDE VARIETY TRIALS**  
**SCOTT STODDARD, MERCED COUNTY**

# COOPERATORS

- Scott Stoddard
- Gene Miyao
- Brenna Aegerter
- Michelle LeStrange & Tom Turini
- Joe Nunez
- 
- Aric Barcellos, A-Bar Ranch
- John Campo, Del Mar Farms
- JH Meek & Sons
- Hal Robertson
- UC WSREC
- Catherine Fanucchi
- Chuck Rivara, CTRI

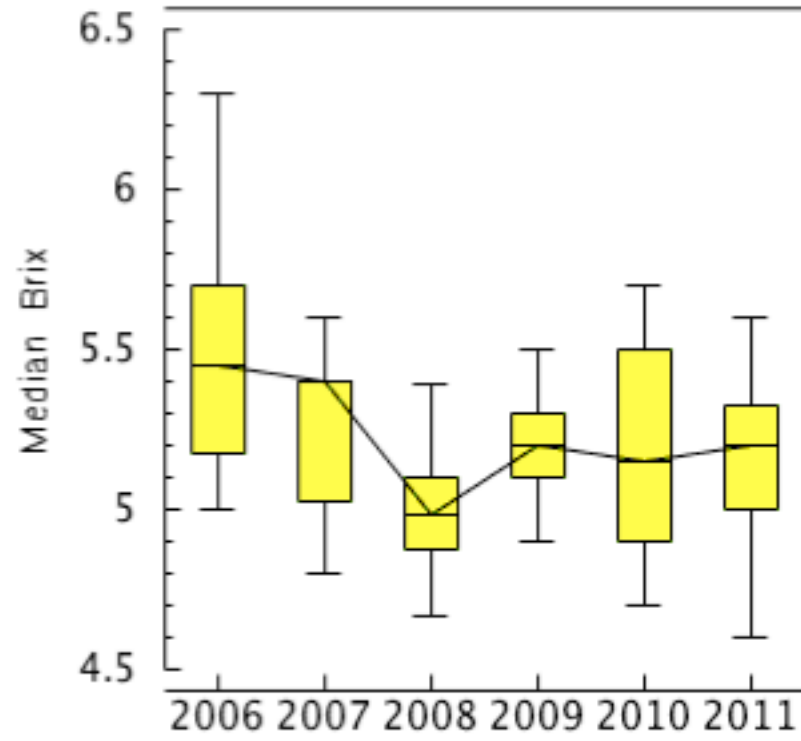
# UCCE Processing Tomato Variety Trial

## pH distribution



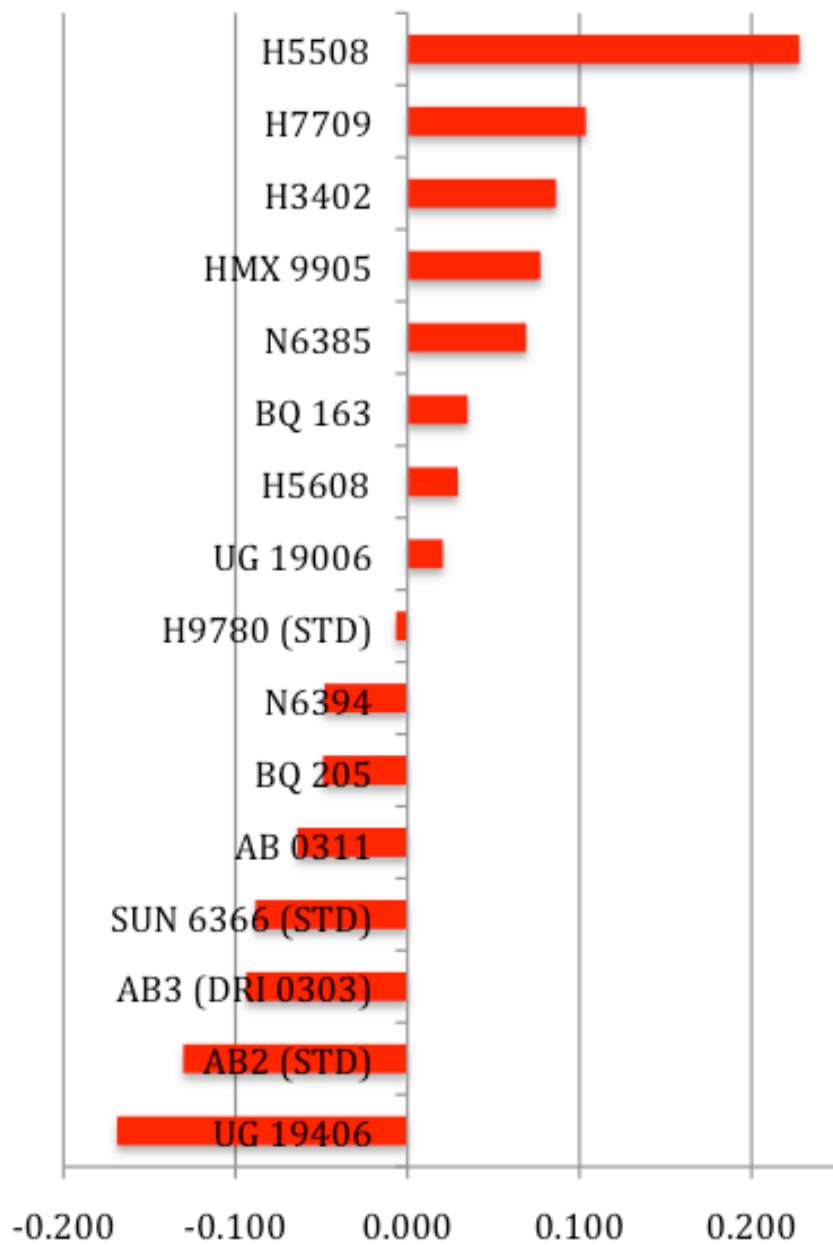
year

## Brix distribution



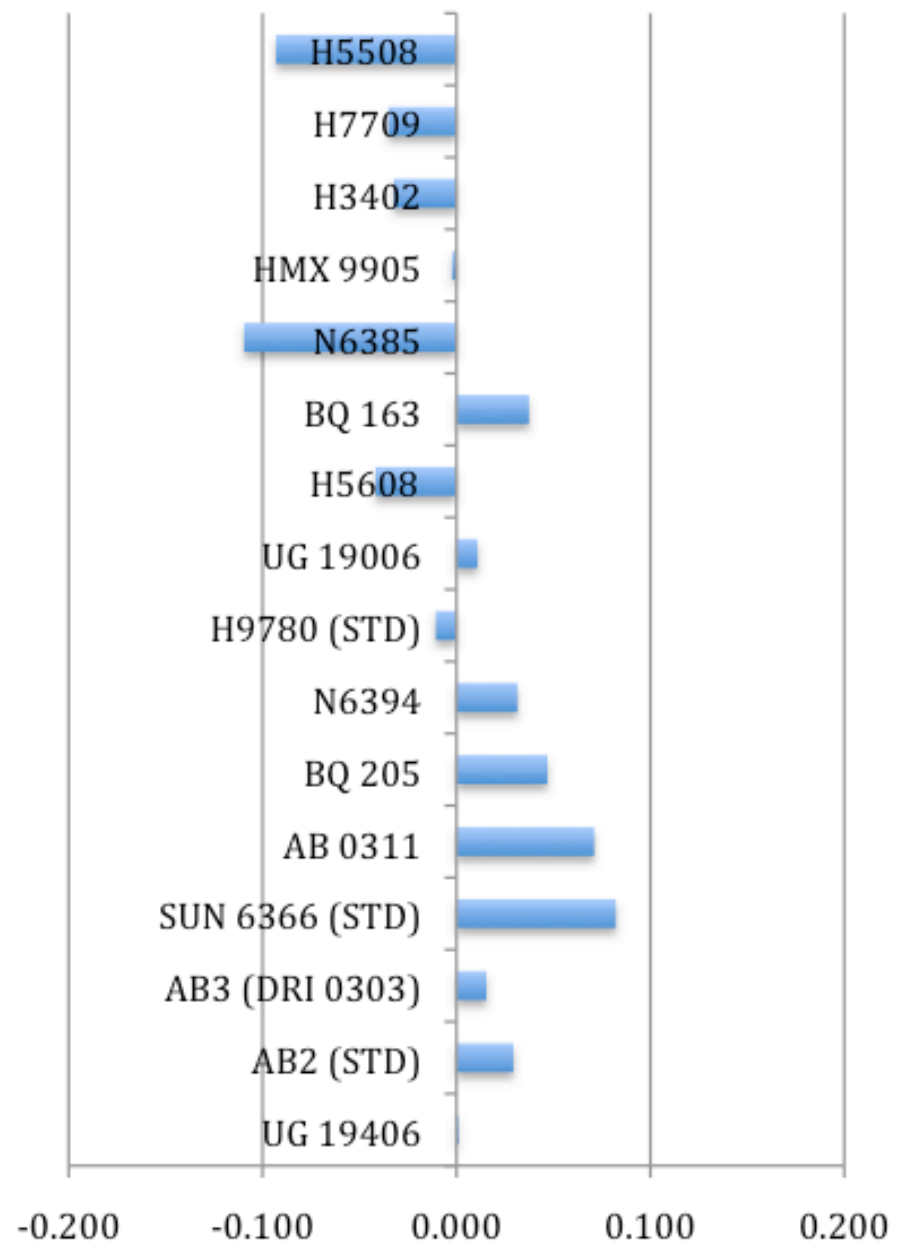
year

### Average Yield, mid-maturity



Normalized Yield, 0 = all location mean

### Average Soluble Solids



Normalized SS, 0 = all location mean





Full results available at  
[http://cemerced.ucdavis.edu/vegetable\\_crops/](http://cemerced.ucdavis.edu/vegetable_crops/)

